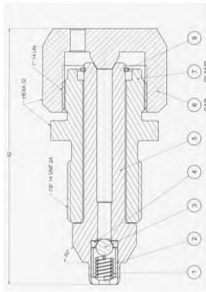


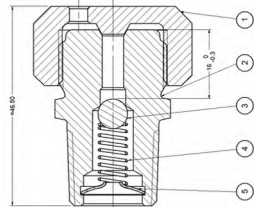
Fitting Parts



LARGE SELECTION OF FITTING GREASE/SEALANT, BLEEDER PLUG, internal CHECK VALVE, PIPE PLUG THREAD, etc..



HP Fitting 10 -20 ksi pressure service
PN AT-HP-XX-XX-XX

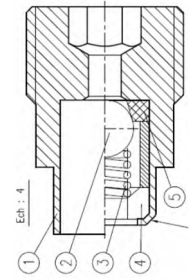


Grease fitting NPT design
PN AT-GX-XX-XX-XX

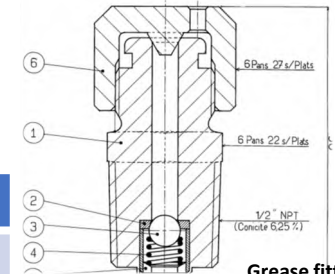


WIDE RANGE CONFIG POSSIBILITY DIM/GRADE

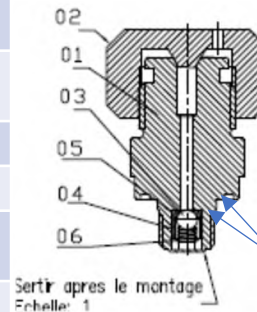
Thread CONNECTION	¼" NPT	3/8"NPT	½"NPT	¾"NPT	1"NPT	7/8"UN	ISO MXX	¾" ½" NPT SPECIAL for check valve assembly under STD NPT FITTING	BSPT GAZ NPSM	Etc,,
Head connect		¾"16 UN	1"14 UN	GB design	ISO MXX	Etc,,				
BODY	XC18	A350LF2	4130	4140	316L 17-4 PH	F44 F51 F 55	INCO 625-825	INCO 718	Etc,,	
PLATING	ZINC	MOLYCOTE	XYLAN	PHOSPHATE	Everslik	Bore	Etc,			
SEAT	WITHOUT steel/steel	PTFE	PEEK	Etc,,						
Ball	Tungsten Carbide	316	440	Monel	Etc,,					
Spring	302	316	Inco 600	Inco 750	Mp 35	Eligoy	Etc,,			
Retainer	Without	316	Inco 600	Inco 718	Etc,,					
O'ring for cylindrical connection	Nitrile 70-90 shore	Viton	Etc,,							



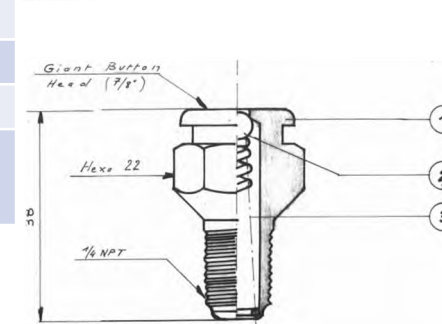
Check valve ¼-1/2
PN AT-CX-XX-XX-XX



Grease fitting
PN AT-GX-XX-XX-XX



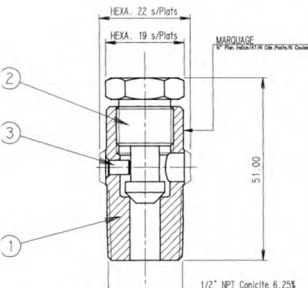
Grease fitting M design
PN AT-GX-XX-XX-XX with 2 external O'ring



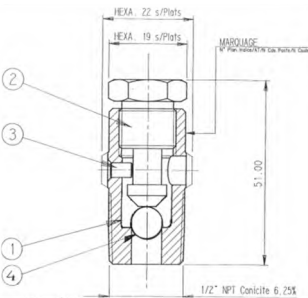
Send us your designation & we can offer you the standard or customised configuration to meet your needs

Customer description Ex: Internal check valve ¼ NPT inco 718 body, incoX-750 spring, PTFE seat, Inco718 retainer, carbide ball with thread coat Everslik



ATAM PN : AT-CI-1/4-53-00



Bleeder plug design
PN AT-BD-XX-XX-XX



LARGE SELECTION OF PLUG

DESIGNATION	DIM	Thread	GRADE	COATING					DESIGN EXAMPLE
PLUG PIPE THREAD HEX SOC	1/8 to 1" M8- M30	NPT UN ISO Gaz NPSM BSPT Special	ALL GRADE Steel Stainless Steel Alloys Incoloy Duplex Super Duplex Cupro	Zinc irrise Phosphate Z/M Molycote Xylan XXXX Everslik Bore etc					
PLUG PIPE THREAD HEX HD	1/8 to 4" M8- M XX	NPT UN ISO Gaz NPSM BSPT Special	ALL GRADE Steel Stainless Steel Alloys Incoloy Duplex Super Duplex Cupro	Zinc irrise Phosphate Z/M Molycote Xylan XXXX Everslik Bore etc					

HP FITTING config possibility

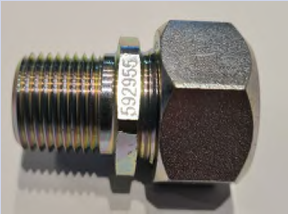
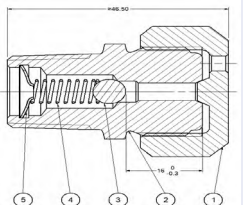
DESIGNATION	DIM CONNECTOR	Head Thread	GRADE	COATING	SEAT	BALL	RETAINER	SPRING	PRESSURE	DESIGN EXAMPLE
Fitting Sealant HP Vent Cap	UN ISO 9/16 Autoclave Special	UN ISO Special	ALL GRADE Steel Stainless Steel Alloys Incoloy Duplex SuperDuplex	Zinc irrise Phosphate Z/M Molycote Xylan XXXX Everslik Bore etc	PTFE PEEK other	Tungsten Carbide 316L 440 MONEL Other	316l Duplex Inco 718 Other	302 Inco 600 Inco 750 Mp 35 Eligoy Other	TO 20 000 PSI	
SLB EXAMPLE PN 712806 ATAM PN AT-HP-7/8-01-00	,875 14 UN	1"14 NS	BODY Alloy 718 Gland 4140	Gland & Cap Molycoat	Peek	Tungsten Carbide	Alloy 718	MP-35	20 KSI	

Send us your designation & we can offer you the standard or customised configuration to meet your needs

LARGE INTERNAL CHECK VALVE DESIGN

DESIGNATION	DIM CONNECTOR	Head Thread	GRADE	COATING	SEAT	BALL	RETAINER	SPRING	PRESSURE	DESIGN EXAMPLE
INTERNAL CHECK VALVE	HEAD THREAD ¼ to 1"	UN ISO NPT NPT special Gaz NPSM	ALL GRADE Steel Stainless Steel Alloys Incoloy Duplex SuperDuplex	Zinc irrise Phosphate Z/M Molycote Xylan XXXX Everslik Bore etc	PTFE PEEK other	Tungsten Carbide 316L 440 MONEL Other	316l Duplex Inco 718 Other	302 Inco 600 Inco 750 Mp 35 Eligoy Other	TO 20 000 PSI	
SLB EXAMPLE PN 678627-06 ATAM PN AT-CI-1/4-53-00		¼" NPT	BODY Alloy 718	Everslik	PTFE	Tungsten Carbide	Alloy 718	INCO 750	15 KSI	

LARGE FITTING GREASE METAL/METAL SEAL


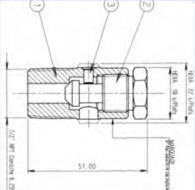
DESIGNATION	DIM CONNECTOR	Head Thread	GRADE	COATING	SEAT	BALL	Spring washstop	SPRING	PRESSURE	DESIGN EXAMPLE
FITTING GREASE	NPT UN ISO GB Gaz NPSM BSPT Special	UN ISO GB Special	ALL GRADE Steel Stainless Steel Alloys Incoloy Duplex SuperDuplex	Zinc irrise Phosphate Z/M Molycote Xylan XXXX Everslik Bore etc	No metal/ metal	Tungsten Carbide 316L 440 MONEL Other	304 316l Duplex Inco 718 Other	302 Inco 600 Inco 750 Mp 35 Eligoy Other	TO 15 000 PSI	
SLB EXAMPLE PN 5929-55 ATAM PN AT-GA-2-10-00	½ NPT	1"14 un	4140	Zinc	No metal/ metal	Tungsten carbide	304	INCO 600	10 KSI	

Send us your designation & we can offer you the standard or customised configuration to meet your needs

LARGE FITTING GREASE SOFT SEAT SEAL DESIGN


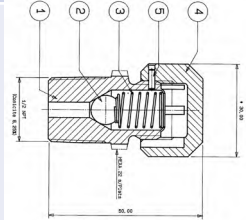
DESIGNATION	DIM CONNECTOR	Head Thread	GRADE	COATING	SEAT	BALL	RETAINER	SPRING	PRESSURE	DESIGN EXAMPLE
GREASE FITTING SOFT SEAT SEAL	NPT UN ISO Gaz NPSM BSPT Special	UN ISO Special +GIANT BUTTOM HEAD DESIGN	ALL GRADE Steel Stainless Steel Alloys Incoloy Duplex SuperDuplex	Zinc irrise Phosphate Z/M Molycote Xylan XXXX Everslik Bore etc	PTFE PEEK other	Tungsten Carbide 316L 440 MONEL Other	304 316l Duplex Inco 718 Other	302 Inco 600 Inco 750 Mp 35 Eligoy Other	TO 10 000 PSI	
SLB EXAMPLE PN 230038-02-02 ATAM PN AT-GA-02-01-00	½ NPT	¾ 16 un +GB	FPS 313 XC18	Zinc	PTFE	316L	316L	INCO 600	10 KSI	
Pn 230039-01-03 ATAM PN AT-GI-04-02-00	¾ NPT	¾ 16 un +GB	316L	NO	PTFE	316L	316L	INCO 600	10 KSI	

LARGE BLEEDER PLUG DESIGN

DESIGNATION	DIM CONNECTOR		GRADE	COATING	SEAT	Option BALL seal	PIN stop		PRESSURE	DESIGN EXAMPLE
BLEEDER PLUG ¼ to 2"	NPT UN ISO Gaz NPSM BSPT Special		ALL GRADE Steel Stainless Steel Alloys Incoloy Duplex SuperDuplex	Zinc irrise Phosphate Z/M Molycote Xylan XXXX Everslik Bore etc		Tungsten Carbide 316L 440 MONEL Other	304 316l Duplex Inco 718 Other		TO 10 000 PSI	
SLB EXAMPLE PN 038315-70-03-10 ATAM PN AT-BD-1-02-00	1" NPT		316L	Xylan on plug head thread	No	No	303-304l		10 KSI	

Send us your designation & we can offer you the standard or customised configuration to meet your needs

LARGE RELIEF PLUG DESIGN

DESIGNATION	DIM CONNECTOR	Head Thread	GRADE	COATING	SEAT	BALL	PIN stop	SPRING	PRESSURE	DESIGN
RELIEF PLUG 1/8 - 1"	NPT UN ISO Gaz NPSM BSPT Special	UN ISO Special	ALL GRADE Steel Stainless Steel Alloys Incoloy Duplex SuperDuplex	Zinc irrise Phosphate Z/M Molycote Xylan XXXX Everslik Bore etc	No	Tungsten Carbide 316L 440 MONEL Other	304 316l Duplex Inco 718 Other	316 Inco 600 Inco 750 Mp 35 Eligoy Other		
SLB EXAMPLE PN 127692-01 ATAM PN AT-EV-1/2-01-00	½ NPT	¾ 16 un	A350LF2	Zinc	No metal/ metal	316L	303-304l	316L		

All fitting part's are designed and will be customised with Customers specifications

Grade and specification selected per requirement call

For all we could provide docs report/requirement (3,1b pressure test, coating report, traçability etc,

Bellow next pages you could found current PN used or used on past with your PN code organize by part family

Send us your designation & we can offer you the standard or customised configuration to meet your needs

SLB PN	HEX HEAD PLUG
062239-01	1/8" NPT HEXAGONAL HEAD PLUG
062239-03	3/8" NPT HEXAGONAL HEAD PLUG
062239-04	1/2" NPT HEXAGONAL HEAD PLUG
062239-06	1" NPT HEXAGONAL HEAD PLUG
062224-06-03 REV 01	1" NPT HEXAGONAL HEAD PLUG
062239-09	2 " NPT HEXAGONAL HEAD PLUG
062239-12	4" NPT HEXAGONAL HEAD PLUG
2173425-03-29 REV01	1/2" NPT HEXAGONAL HEAD PLUG
2173425-03-30 REV 01	3/4" NPT HEXAGONAL HEAD PLUG
2173425-03-21 REV01	1-1/2' NPT HEXAGONAL HEAD PLUG
2173425-03-40 REV 01	1" NPT HEXAGONAL HEAD PLUG
2173425-03-42	1/4" NPT HEXAGONAL HEAD PLUG
233882-05	PIPE PLUG 1" NPT DUPLEX
235539-63 REV 02	PLUG HEX HEAD SPEC 2-1/4 8UN-2
50392294 REV 01	1" NPT HEXAGONAL HEAD PLUG
005930-01 REV 01	PIPE PLUG HEX HD 1/4"NPT
005930-01-10 REV 02	PIPE PLUG HEX HD 1/4"NPT - ZN
005930-02-10 REV 03	PIPE PLUG HEX HD 3/8" NPT
005930-03 REV 01	PIPE PLUG HEX HEAD 1/2" NPT
005930-03-10 REV 05	PIPE PLUG HEX HD 1/2" NPT ZNP
005930-03-10-02 REV 01	PIPE PLUG HEX HD 1/2" NPT ZN
005930-04 REV 01	PIPE PLUG HEX HEAD 3/4" NPT
005930-05-10 REV 02	PIPE PLUG HEX HD 1 NPT ZN
005930-05-10-01 REV 01	PIPE PLUG HEX HD 1 NPT ZN
005930-06-10 REV 03	PIPE PLUG HEX HD 1-1/4" NPT
005930-07-10 REV 02	PIPE PLUG HX HD 1-1/2" NPT ZN
005930-11 REV 02	PIPE PLUG HEX HEAD 1/8 NPT
005930-12	PIPE PLUG HEX HD 1/2" NPT
005930-13 REV 02	PIPE PLUG HEX HD 3/8" NPT
005930-14 REV 03	PIPE PLUG HEX HD 1/4"
005930-16 REV 02	PIPE PLUG HEX HD 3/4" NPT
005930-16-01 REV 01	PIPE PLUG HEX HD 3/4" NPT 316
005930-17 REV 02	PIPE PLUG HEX HD 1 NPT
005930-18 REV 02	PIPE PLUG HEX HD 1/2 NPT 316
0005930-18-05 REV 01	PIPE PLUG HEX HD 1/2 NOM 316
005930-18-06 REV 01	PIPE PLUG HEX HD 1/2 NPT 316
005930-25	PIPE PLUG HEX HD 1"1/2 NPT
005930-35 REV 01	PIPE PLUG HEX HD 1/2" NPT 825
005930-57 REV 02	PIPE PLUG HEX HEAD 1/4" NPT
005930-57-01 REV 02	PIPE PLUG HEX HEAD 1/4 NPT 825
005930-59 REV 03	PIPE PLUG HEX HD 1/4" NPT 316
005930-59-03 REV 01	PIPE PLUG HEX HD 1/4" NPT 316
005930-60 REV 02	PIPE PLUG HEX HEAD 1" NPT 316
005930-61 REV 02	PLUG HEX HEAD 1" NPT 718 NICK
005930-62 REV 03	PIPE PLUG HEX HD 3/8" NPT NOM
005930-67 REV 02	PIPE PLUG HEX HD 3/8" NPT 316



SLB PN	HEX SOC PLUG
002504-04	PLUG,PIPE-THREADED HEX SOC 1/4
002504-22-01	PLUG PIPE-THREADED HEX SOC 1/4
002504-30	PLUG,PIPE-THREADED HEX SOC 1/8
002504-31	PLUG,PIPE-THREADED HEX SOC 1/4
002504-31-01 REV 01	PLUG,PIPE-THREADED HEX SOC 1/4
002504-39	PLUG,PIPE-THREADED HEX SOC 1/2
002504-42	PLUG,PIPE-THREADED HEX SOC 3/8
268689-01 REV 03	PLUG PIPE PRESSURE HEXA SOCKET
705790-01	PLUG,PIPE-THREADED HEX SOC 1/4
2206523-01 REV 04	PLUG PIPE PRESSURE HEXA SOCKET
7B-WWS108000	1/4 NPT HEX SOCKET PIPE PLUG

SLB PN	RELIEF PLUG
127692-01	RELIEF PLUG 1/2" NPT
127692-02	RELIEF PLUG 3/4" NPT
127692-03	RELIEF PLUG 1" NPT
127692-09	RELIEF PLUG 1/2" NPT S/S
127692-10	RELIEF PLUG 3/8" NPT SUPPLIER
127692-11	RELIEF PLUG 3/4" NPT S/S
127692-12	RELIEF PLUG 1"NPT 0.15-0.3 BAR
127692-13	RELIEF PLUG 1/8" NPT ST/STL
127692-14	RELIEF PLUG 3/4" NPT ST/STL
127692-15	RELIEF PLUG 1/4" NPT
231048-01	RELIEF PLUG 1/4"
231117-20	1/8" NPT PRESSURE RELIEF PLUG
232869-00-06-76	RELIEF PLUG 1/4" NPT
232869-00-07-82	RELIEF PLUG 1/2" NPT PREC.S/ST





SLB PN	INTERNAL CHECK VALVE
035060-01	CHECK VALVE 1/4" NPT CS
035060-02	CHECK VALVE 1/4"
035060-03 REV F02	CHECK VALVE 1/4" NPT DUPLEX
124325-06-00-03	CHECK VALVE 1/2" NPSM 316L
125390-01	1/2" CHECK VALVE
125390-02	CHECK VALVE 1/2" ST/STL
125390-07	CHECK VALVE 1/2" NPT DUPLEX
218965-01 REV C01	CHECK VALVE ASSY inco 718
218965-02	CHECK VALVE ASSY 1-8UNC-2 MALE inco 718
221034-02 REV 01	ASSY CHECK VALVE inco 825 BODY
221034-04 REV 05	CHECK VALVE ASSY inco 825 BODY
221034-06 REV 01	CHECK VALVE ASSY inco 825 BODY
221034-09 REV 01	CHECK VALVE ASSY inco 825 BODY
232869-00-10-87	CHECK VALVE 1/4" WITH 3.1.B
678627-06 REV 01	CHECK VALVE 1/4 NPT inco 718 BODY
678627-21 REV 01	CHK VALVE 1/4 NPT (316 SS)
678627-06-01 REV03	CHECK VALVE FITTING 1/4 NPT inco 718 BODY
2173521-01-01	CHECK VALVE 1/4" NPSM
2173521-01-03	CHECK VALVE 1/4" NPSM
2173521-02-02	1/2" NPSM CHECK VALVE
2173521-02-03	1/2" NPSM CHECK VALVE AISI 316
31207 REV A01	CHECK VALVE U BOP RAM WEDGELOK



SLB PN	FITTING GREASE
005929-25-02 REV 01	FITTING GREASE 1/2 NPT STL
005929-55	FITTING GREASE 1/2 NPT 4140
005929-55-01	FITTING GREASE 1/2 NPT 316L
005929-55-02	FITTING GREASE 1/2 NPT 4140
005929-55-03	FITTING GREASE 1/2 NPT
005929-55-08 REV 01	FITTING GREASE 1/2 NPT 4140
005929-55-09 REV 01	FITTING GREASE 1/2 NPT 4140
230038-02-01 REV 01	GREASE FITTING 1/2" NPT STD
230038-02-02 REV 01	GREASE FITTING 1/2" NPT NACE
230038-02-03 REV 01	GREASE FITTING 1/2" NPT 316L
230038-02-04	GREASE FITTING 1/2' NPT DUPLEX
230039-01-01 REV 01	GREASE FITTING 1/4" NPT
230039-01-02 REV 01	GREASE FITTING 1/4" NPT
230039-01-03 REV 01	1/4" NPT GREASE FITTING 316L
230039-01-04 REV 01	GREASE FITTING 1/4' NPT DUPLEX

SLB PN	FITTING SEALANT HP
229322-01 REV B04	FITTING, GREASE STRAIGHT
687950-38-31-27	FITTING, GREASE STRAIGHT .875
687950-43-31-34	FITTING, GREASE STRAIGHT .875
712806-02 REV 01	FITTING GREASE STRAIGHT.875-
712806-03 REV 01	FITTING GREASE STRAIGHT.875-
770006504	FITTING GREASE STRAIGHT.875-
2392585-01	FITTING GREASE STRAIGHT .875

SLB PN	FITTING SEALANT
503517-18	SEALANT FITTING 1/4' NPT GIANT
503517-23-01 REV A01	SEALANT FITTING 1/4" NPT STD
503517-24-01	SEALANT FITTING 1/2" NPT STD
503517-24-02 REV01	SEALANT FITTING 1/2" NPT
503517-27-01 REV A01	SEALANT FITTING 1/4" NPT
503517-27-02 REV 01	SEALANT FITTING 1/4" NPT



SLB PN	BLEEDER PLUG
038315-02 REV J03	BLEED PLUG ASSY 1/2" 316 SST
038315-03 REV J04	BLEED PLUG ASSY1"CS BODY 4130
038315-04 REV J05	BLEED PLUG ASSY 1-1/2' CS BODY
038315-08 REV A03	BLEED PLUG ASSY 1-1/2' 316 SST
038315-60 REV 02	BLEED PLUG 1/2" BSPT (BS-21)
038315-61	BLEED PLUG 1/2" BSPT (BS-21)
038315-62	BLEED PLUG 3/4" BSPT
038315-63	BLEED PLUG 3/4" BSPT 316L
038315-64	BLEED PLUG 1" BSPT (BS-21)
038615-66	BLEED PLUG 1.1/2" BSPT (BS-21)
038315-70-01	BLEED PLUG 1/2" NPT
038315-70-01-03	BLEED PLUG 1/2" NPT 316L
038315-70-01-10	BLEED PLUG 1/2" NPT STAINLESS
038315-70-01-20	BLEED PLUG DUPLEX 1/2" NPT
038315-70-02	BLEED PLUG 1/4" NPT
038315-70-03	BLEED PLUG 1" NPT
038315-70-03-10	BLEED PLUG 1" NPT STAINLESS
038315-70-03-20	BLEED PLUG 1" NPT DUPLEX
038315-70-04	BLEED PLUG 1.5" NPT
038315-70-04-10	BLEED PLUG 1.5" NPT STAINLESS
038315-70-05	BLEED PLUG 3/4" NPT A350LF2
038315-70-05-10	BLEED PLUG 3/4" NPT 316L
124325-08-01-03	BLEED PLUG 1/2" NPSM 316L
124325-12-00-01	1" NPSM BLEED PLUG LF2
124325-12-00-03	BLEED PLUG 1" NPSM 316L
124325-19-00-03	BLEED PLUG 316L 1.5" NPSM
232869-00-03-94	BLEEDER PLUG DN25(1') PRESSURE
232869-00-03-95	BLEEDER PLUG DN50(2') PRESSURE
232869-00-12-53	BLEED PLUG 1" NPT
232869-00-12-54	BLEED PLUG 3/4" NPT
232869-00-12-55	BLEED PLUG 1/2" NPT
2028834-01 REV 03	BLEEDER PLUG 1/2" NPT
2028834-17 REV 01	BLEEDER PLUG 1/2" NPT NACE